

TETRAGON

for Landscape Areas

Technical specification

Our toilet buildings are delivered pre-fabricated for installation on a foundation prepared by the client. Danfo supplies all the drawings and technical specifications needed to make planning application together with foundation details.

Beams

Insulated wooden or concrete slab construction with embedded floor drains.

Walls

The exterior walls are made of sandwich panels insulated with CFC-free polyurethane, a design that provides superior strength, durability and insulation properties. There are many options for external cladding. Interior walls in public areas are clad with compact laminate.

Roof / Ceiling

Ridged roof with 18° slope as a standard. The ceiling in public areas is made of sandwich panels with compact laminate.

Floor

Flooring laid to falls to gully.
Optional finishes.

Doors

Aluminium doors to WC rooms with a steel plated door to service area for security purposes. These can be coloured or clad to suit the location.

Standard size cubicle

Wall mounted stainless steel toilet bowl. Manual and automatic flushing via door lock. Integrated module with wash basin, soap dispenser, warm-air hand-drier, toilet paper holder and waste-paper basket and mirror. Clothes hook.

Fully accessible facility

A fully accessible facility is provided which complies with current UK legislation. WC pan is provided adjacent to the washing unit which has knee hole access under for wheelchair users. An audible alarm is provided.

Urinal

Wall mounted stainless steel urinal trough. Automatic flushing via sensor. Optional hand wash and hand drier.

Waste disposal

Waste disposal can be provided by means of a service sink for recreational sites.

Service area

Securely locked space containing all sensitive and important equipment such as water and electricity meters, solenoid valves, water heater, heating and ventilation system etc. All consumable supplies are replenished from the service room.

Heating / Ventilation

Air heating with duct heater and duct fan.
Mechanically balanced duct ventilation with air in- and outlet in all areas.

Connections

ø 32 mm fresh water connection.
ø110 mm sewer connection.

Electricity

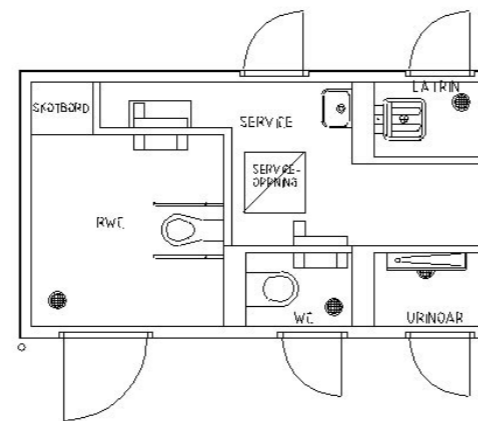
Distribution box with automatic fuses and GFCI (Ground fault circuit interrupter). Timers and relays for automatic functions.
Lighting with long-life fittings.

Options

- Coin boxes
- Hand wash water and hot air hand drier in urinal
- Disabled alarm
- Electrical door opener
- Self cleaning toilet bowl and wash hand basin
- Emergency phone
- Sharps disposal chutes

Layout

The layout below shows a Tetragon with one easily accessible cubicle, one standard size cubicle, one urinal, one sluice and a service room.



Rest area Kvarndammen, Sweden



TETRAGON

- Public toilet for landscape areas

PRODUCTION - MARKETING - AFTER-SALES SERVICE
 © Danfo AB, Box 103, 713 23 Nora, Sweden.
 More info: www.danfo.com E-mail: info@danfo.com
 Tel. +46(0)587-861 00 Fax. +46 (0)587-106 02

TETRAGON - Exterior



Rest area Tallbacken



Rest area Tossebergsklätten



Rest area Delsjön



Rest area Hålgån-Byråsen



Rest area Mats Knuts



Rest area Höga Kusten



Rest area Gårda Brygga



Rest area Björnället

Flexible exterior
... with regard to type of cladding, colour, roofing etc.

The rest area at Tallbacken was voted best rest area in 2003 by The Swedish Automobile Association.

Please look for more references at our web-site www.danfo.com.

The Tetrakon toilet unit for landscape areas is very flexible in design and function. The exterior is adapted in design and colour to blend in with the surroundings in a natural way.

Each building has direct access to individual toilet rooms without lobby areas. All the equipment is located in a secure service area at the rear of the building.

The building can be furnished with extra functions such as automatic toilet bowl, electrical door opener or an emergency phone linked to a call centre.

TETRAGON - Interior

Interior

The interior materials are chosen for ease of cleaning and removal of graffiti and to reduce vandalism.

The modular design enables the combination of any number and type of cubicles in one building - A fully accessible facility with knee hole access under the wash hand basin for wheelchair users. Conventional cubicles and urinals are provided.

Service area

The Danfo System is based on having all vital components in the secure service room.

All consumables, such as soap and toilet paper, are replenished from the service room. The service room also contains control systems for e.g. flushing, ventilation and heating as well as storage for cleaning material and equipment.



Cubicle easily accessible

Service area



Standard size cubicle with tile flooring.



Stainless urinal trough.



Stainless wall mounted slopsink for waste disposal.