

MODELS

Model TT110



Rest area in Senftenberg, Germany

Model TT110 B



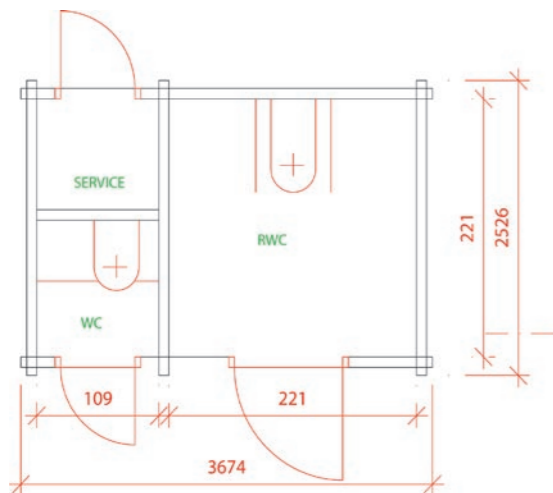
Rest area in Sweden



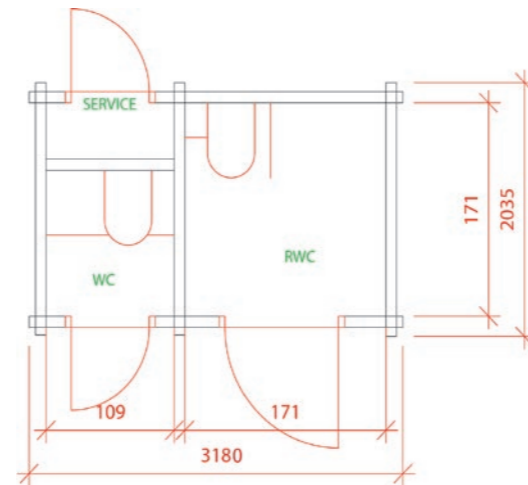
Service room door



Log House toilet Senftenberg, Germany



Lay-out Log House Toilet TT110.



Lay-out Log House Toilet TT110 B.

LOG HOUSE TOILET

Model TT110 and TT110 B

PRODUCTION - MARKETING - AFTER-SALES SERVICE

© Danfo AB, Box 103, 713 23 Nora, Sweden
 More info: www.danfo.com E-mail: info@danfo.com
 Tel. 0587-861 00 Fax. 0587-106 02

Details are subject to changes in design and construction.
2006 03/MN/H

LOG HOUSE TOILET

General information

The Log House Toilet has a closed system, which makes it specially suitable for installation where water and sewage are not available. It is a simple toilet, however without lowering the standards of quality and comfort.

The log house comes in a construction kit and should be assembled by a carpenter. The building is not painted when delivered.

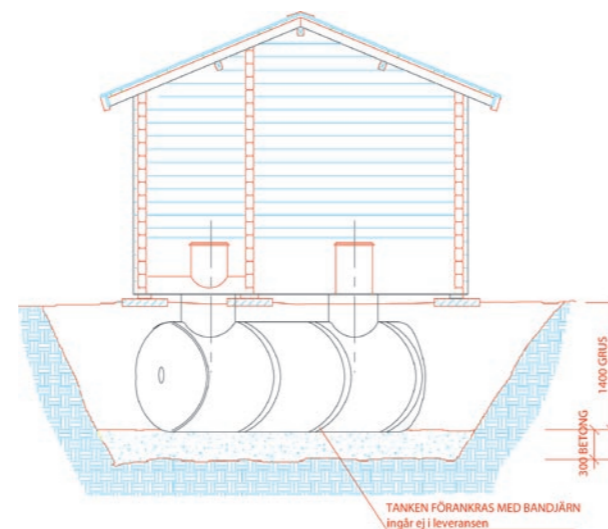
The roof is made of corrugated steel sheet with a light transmitting part.

The log house toilet Model TT110 has a larger disabled sized cubicle than Model TT110 B. All other equipment is the same in both models.



Closed system

The log house toilet has a closed waste system with a separate tank, which is included in the delivery. The tank has a capacity of approx. 10 000 visits.



This robust log house toilet, built of logs dovetailed at the corners, blends in well with the environment wherever located. The toilet with its integrated waste water tank forms a closed system suitable for installation where there is no water or sewerage available.

The building contains one normal cubicle and one cubicle with access for disabled people. The cubicles are equipped with easy to clean and well-tried toilet modules as well as all other necessary interior components.

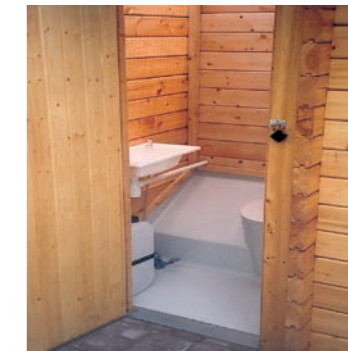
On the back of the building there is a lockable service room for storage of e.g. consumables and cleaning equipment.

LOG HOUSE TOILET

Interior

In both cubicles, the floor and toilet unit is made of non-skid patterned fibre glass reinforced plastic polyester module. The cubicles also contain a handwash unit with water tap (option), toilet paper holder and a 25 litre fresh water container with foot pump.

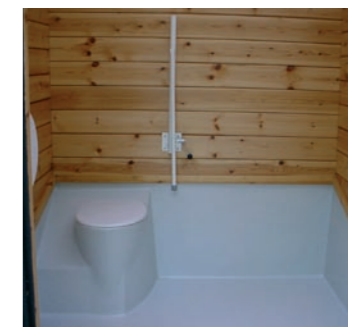
The disabled sized cubicle is equipped with an arm support and has a wider door opening and larger floor area.



Normal sized cubicle



Disabled sized cubicle in TT110



Disabled sized cubicle in TT110 B

The log house toilet blends in well with the surrounding landscape and can be placed almost anywhere. The choice of colour can be made to suit the environment but the building looks just as nice in its natural wood colour. The toilet with its integrated waste water tank facilitates a flexible location.

